

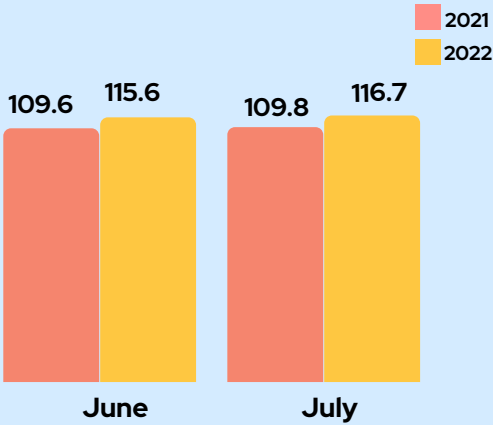
CONSUMER PRICE INDEX IN REGION X

JULY 2022

(2018=100)

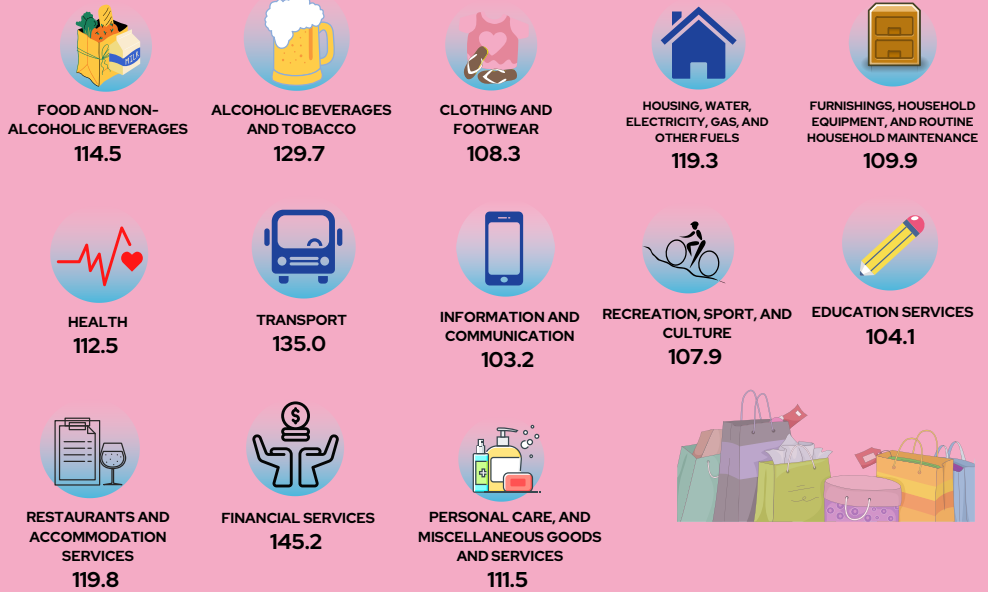
PSAX-IG-2022-17

CONSUMER PRICE INDEX (ALL ITEMS)

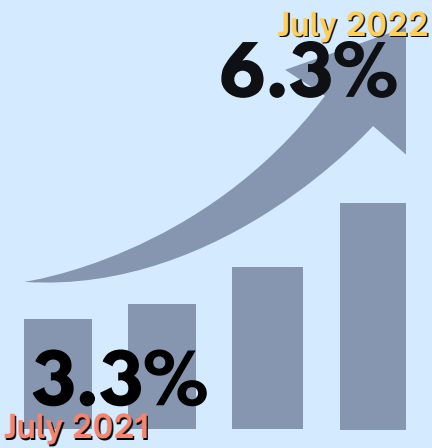


CONSUMER PRICE INDEX (CPI) Indicator of the changes in the average retail prices of a fixed basket of goods and services commonly purchased by households relative to a base year.

CONSUMER PRICE INDEX FOR ALL INCOME HOUSEHOLDS BY COMMODITY GROUP



INFLATION RATE (ALL ITEMS)



INFLATION RATE (IR)

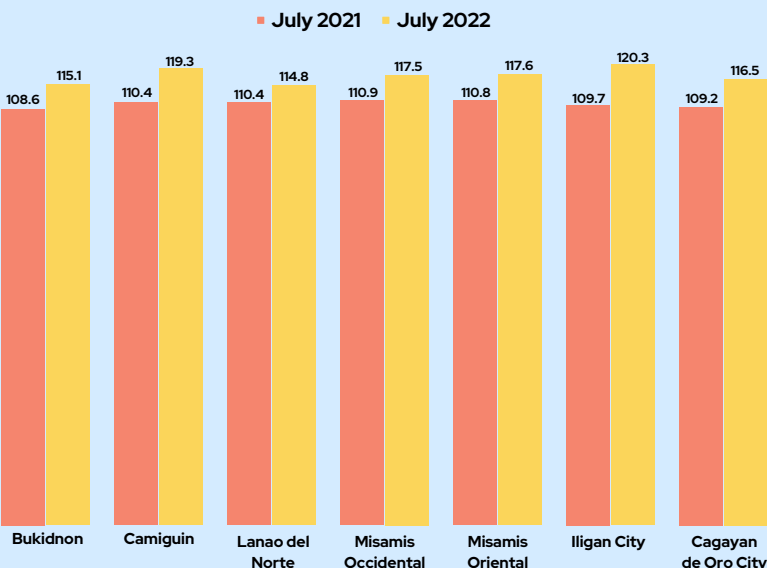
Rate of change of the CPI expressed in percent.

0.86

PURCHASING POWER OF PESO (PPP)

How much the peso in the base period is worth in another period.

YEAR-ON-YEAR CONSUMER PRICE INDEX FOR ALL ITEMS BY PROVINCE/HUCs



YEAR-ON-YEAR INFLATION RATE FOR ALL ITEMS BY PROVINCE/HUCs

