

# 2024 CENSUS OF POPULATION AND COMMUNITY-BASED MONITORING SYSTEM (2024 POPCEN-CBMS)

PSAX-IG-2024-09



## What is the 2024 POPCEN-CBMS?

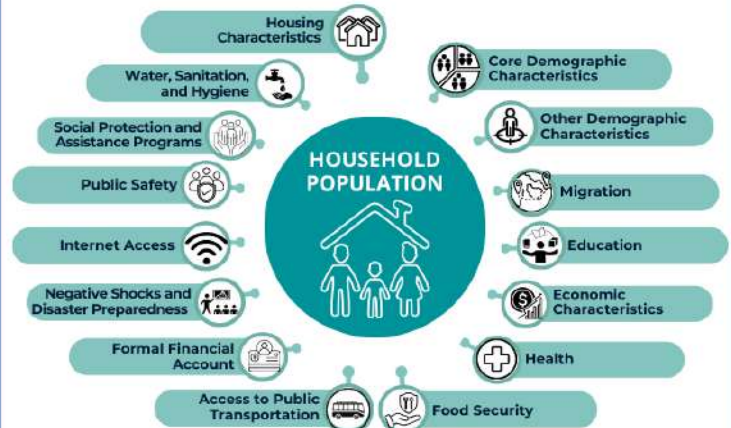
The Census of Population is a complete enumeration of households and institutional living quarters in the country, which is designed to take an inventory of the total population of the Philippines.

The Community-Based Monitoring System refers to an organized technology-based system of collecting, processing, and validating necessary disaggregated data that may be used for planning, program implementation, and impact monitoring at the local level.

### THE 2024 POPCEN-CBMS AIMS TO:

- Update the inventory of the total population in all barangays, cities/municipalities, provinces, and regions in the country
- Update the list of beneficiaries of government social protection programs thereby reducing leakages
- Update the distribution of shares of Local Government Units in the National Tax Allocation
- Aid in the implementation of the recently signed Republic Act (RA) No. 11964 or the "Automatic Income Classification of Local Government Units Act"
- Aid in the efficient use of government resources

### MAJOR DATA ITEMS TO BE COLLECTED:



### INSTITUTIONAL POPULATION

- Residence Status
- Core Demographic Characteristics
- Education

# 2024 CENSUS OF POPULATION & COMMUNITY-BASED MONITORING SYSTEM

Sa POPCEN at CBMS, Kasama ka sa Pag-unlad tungo sa Makabagong Pilipinas



Philippine Statistics Authority  
Regional Statistical Services Office X  
3rd Floor Limketkai Module-2 BPO & Cyberpark Building  
Rosario Crescent, Brgy. 31, Cagayan de Oro City

0917-821-9152

[rsso10@psa.gov.ph](mailto:rsso10@psa.gov.ph)  
[rsso10socd@psa.gov.ph](mailto:rsso10socd@psa.gov.ph)  
[rsso10.psa.gov.ph](http://rsso10.psa.gov.ph)  
 /psarssox  
 @psarssox

TUVNORD  
 TÜV NORD Philippines Inc.  
**ISO 9001**  
 Certificate No. PHP  
 QMS 24 93 0203-030

