

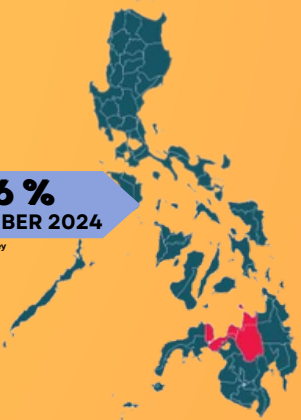
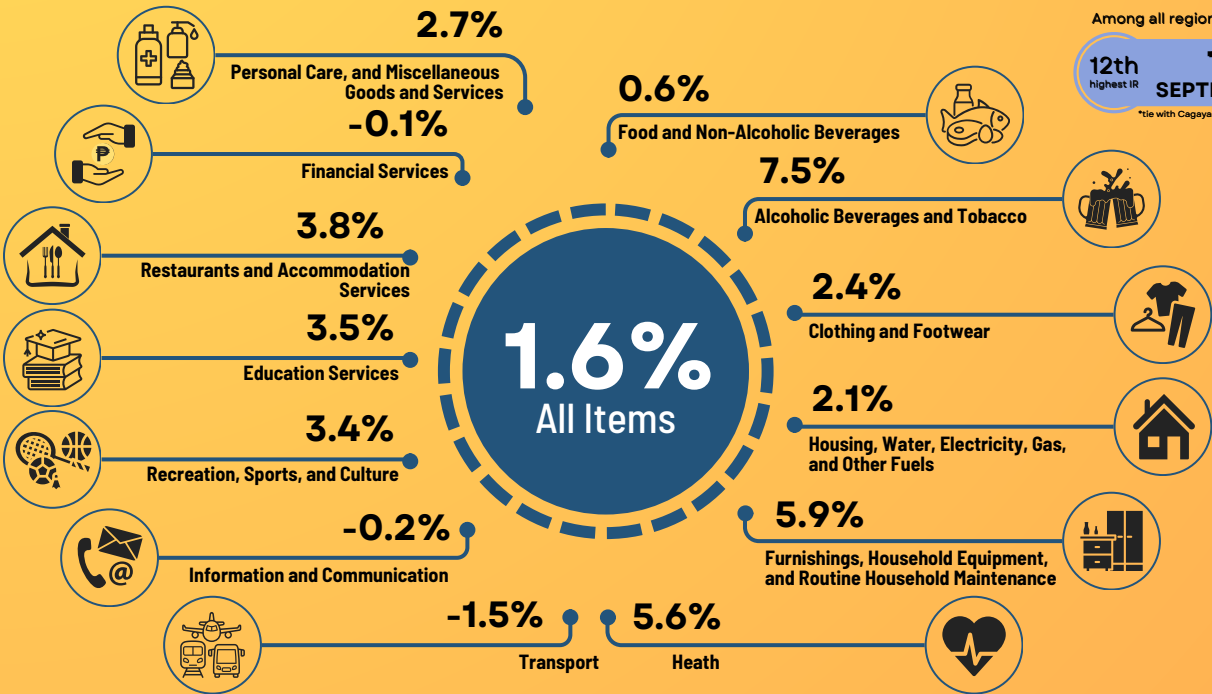


# PRICE STATISTICS IN NORTHERN MINDANAO

## SEPTEMBER 2024 (2018=100)

PSAX-IG-2024-14

### Inflation Rates for All Income Households by Commodity Group



Among all regions

**12th**  
highest IR  
**1.6 %**  
SEPTEMBER 2024  
\*tie with Cagayan Valley

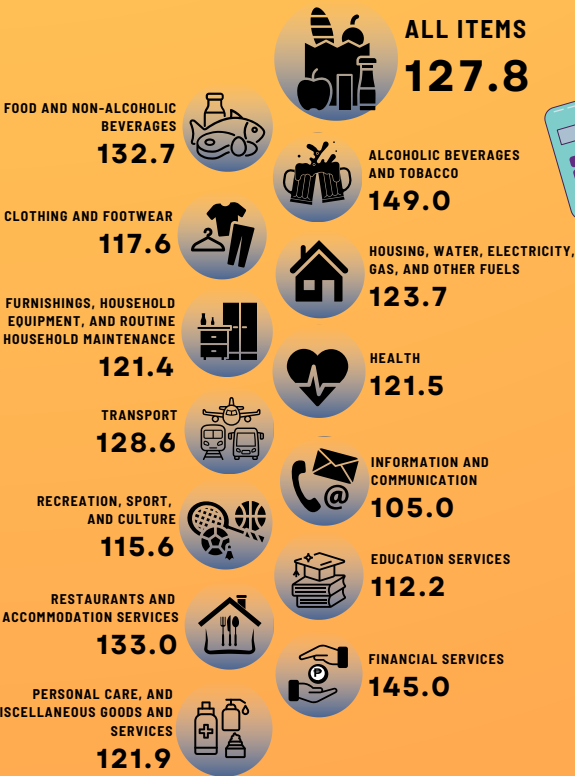
Purchasing Power of Peso (PPP)

**0.78**

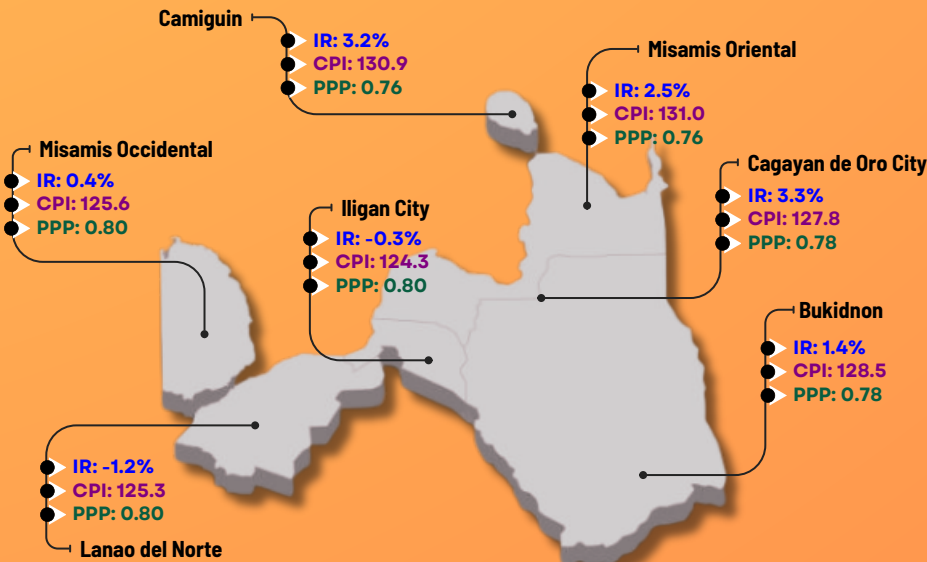
#### Consumer Price Index for All Income Households by Commodity Group

**Computation of CPI** – The computation of the CPI involves consideration of the following important points:

- Base Period** – the reference data or base period is the benchmark or reference date or period at which the index is taken as equal to 100.
- Market Basket** – a sample of the thousands of varieties of goods purchased for consumption and services availed by the households in the country selected to represent the composite price behavior of all goods and services purchased by consumers.
- Weighing System** – the weighing pattern uses the expenditures on various consumer items purchased by households as a proportion to total expenditure.
- Formula** – the formula used in computing the CPI is the weighted arithmetic mean of price relatives, the Laspeyre's formula with a fixed base year period (2018) weights.
- Geographic Coverage** – CPI values are computed at the national, regional, and provincial levels, and for selected cities.



### Price Situation for All Items by Province and Highly Urbanized Cities



#### INFLATION RATE (IR)

Rate of change of the CPI expressed in percent. Inflation is interpreted in terms of declining purchasing power of peso

#### CONSUMER PRICE INDEX (CPI)

Indicator of the changes in the average retail prices of a fixed basket of goods and services commonly purchased by households relative to a base year.

#### PURCHASING POWER OF PESO (PPP)

shows how much the peso in the base period is worth in the current period. It is computed as the reciprocal of the CPI for the period under review multiplied by 100.



Philippine Statistics Authority  
Regional Statistical Services Office X  
3rd Floor Limketkai Module-2 BPO & Cyberpark Building  
Rosario Crescent, Brgy. 31, Cagayan de Oro City

✉ rso10@psa.gov.ph  
rso10socc@psa.gov.ph  
🌐 rso10.psa.gov.ph

📞 0917-821-9152  
0939-931-5594  
📱 /psagovphx

