

# 2022

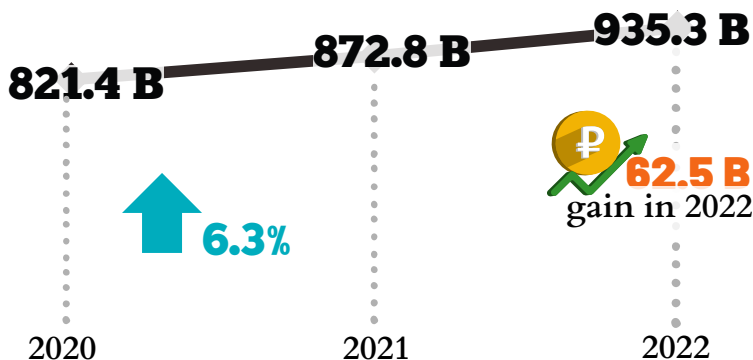
PSAX-IG-2023-07

# GROSS REGIONAL DOMESTIC PRODUCT

at Constant 2018 Prices

## NorMin's economy grew by 7.2%

an accelerated growth from 2021



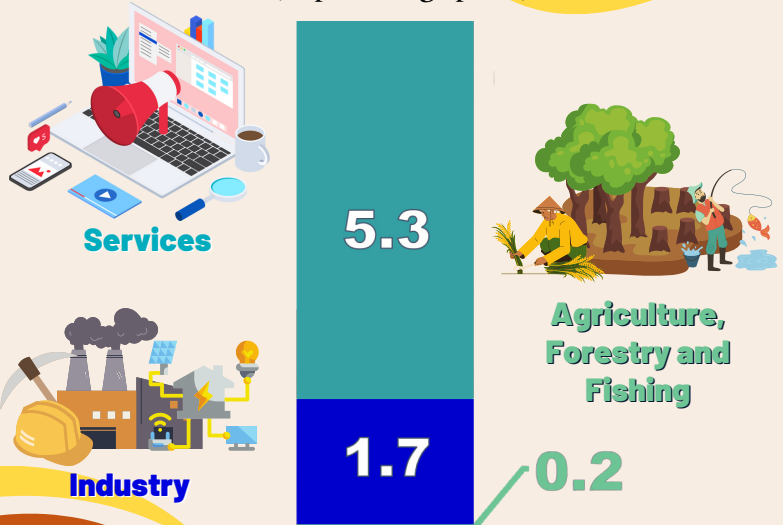
- 3rd** highest per capita GRDP of PhP 182,356
- 7th** biggest regional economy sharing 4.7% of the Phil. GDP
- 7th** biggest contributor of 0.34 percentage point to the Phil. GDP growth

### Top 5 Fast Growing Industries

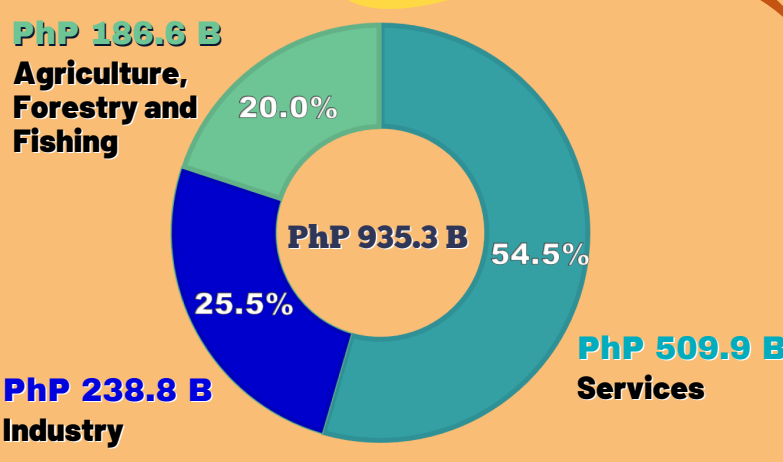


### Contribution of Major Industries to 7.2 % Growth

(in percentage point)



### Share of Major Industries to GRDP



### Top 5 Contributors to Growth

(in percentage point)

