

# 2018-2020

## WATER FLOW ACCOUNTS

### IN NORTHERN MINDANAO

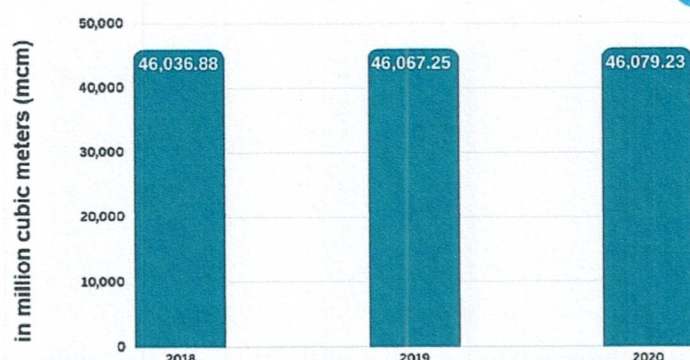
## The Physical Flow Accounting of Water Resources

The accounting of physical flow of water resources describes the flow of water to and from the environment and the economy. This give information on where the water is sourced and how much water is used by the different sectors of the economy either for own use and for distribution to other industries within the economy. This also accounts how much water is returned to the environment.

### What is abstraction?

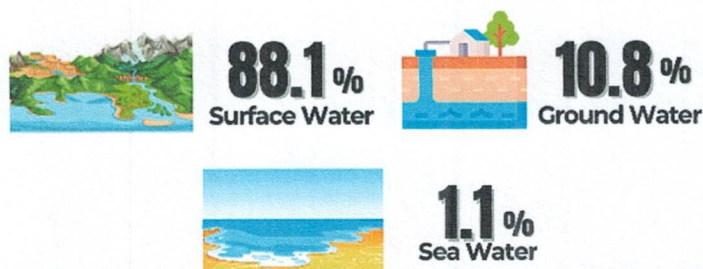
It is the amount of water that is removed from any source, either permanently or temporarily, in a given period of time. It is expressed in volume terms (cubic meters).

### Total Water Abstraction



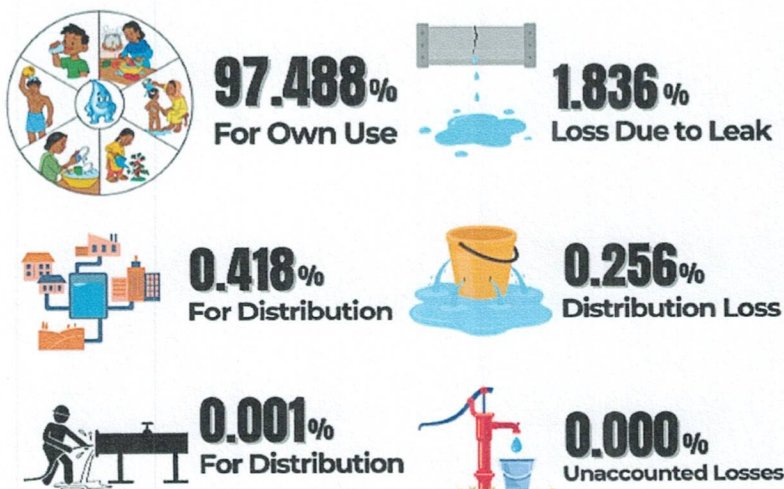
### Sources of Abstracted Water

(Based on Three-Year Average Share)



### Uses of Abstracted Water

(Based on Three-Year Average Share)

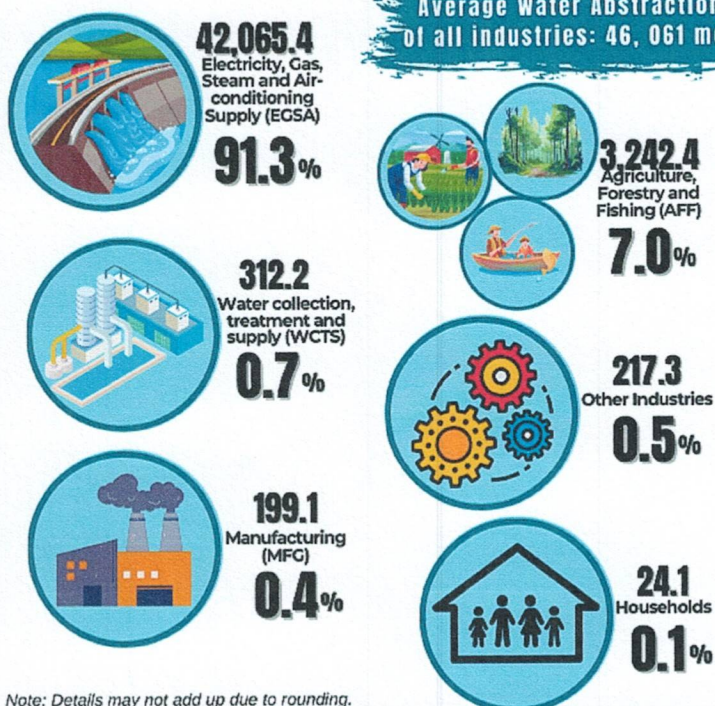


Note: Details may not add up due to rounding.

### Three-Year Average Water Abstraction by Industry

in million cubic meters (mcm)  
in Percent (%) Share

Average Water Abstraction  
of all industries: 46,061 mcm

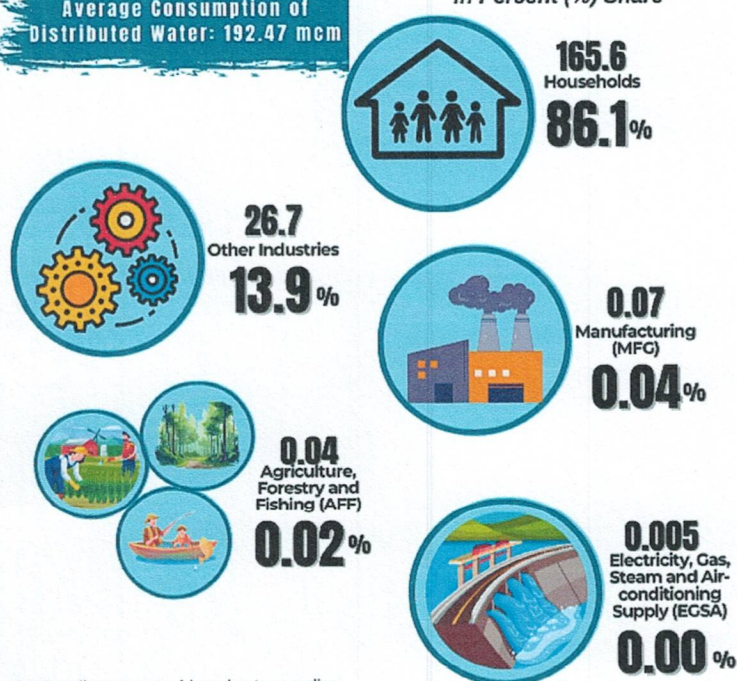


Note: Details may not add up due to rounding.

### Three-Year Average Use of Distributed Water

in million cubic meters (mcm)  
in Percent (%) Share

Average Consumption of  
Distributed Water: 192.47 mcm



Note: Details may not add up due to rounding.